

**CASE STUDY:**

# PROFESSIONAL AUTO TRANSPORT

Professional Auto Transport, headquartered in Southern California, had recently expanded its fleet and the territory it served — but that growth also meant more risk. Management knew it needed to reduce preventable accidents, lower insurance and legal fees, and protect drivers, but it also knew that any solution implemented would need to integrate with its existing event recording provider and be customizable to meet its needs. Professional Auto Transport found all that and more with Mobileye.



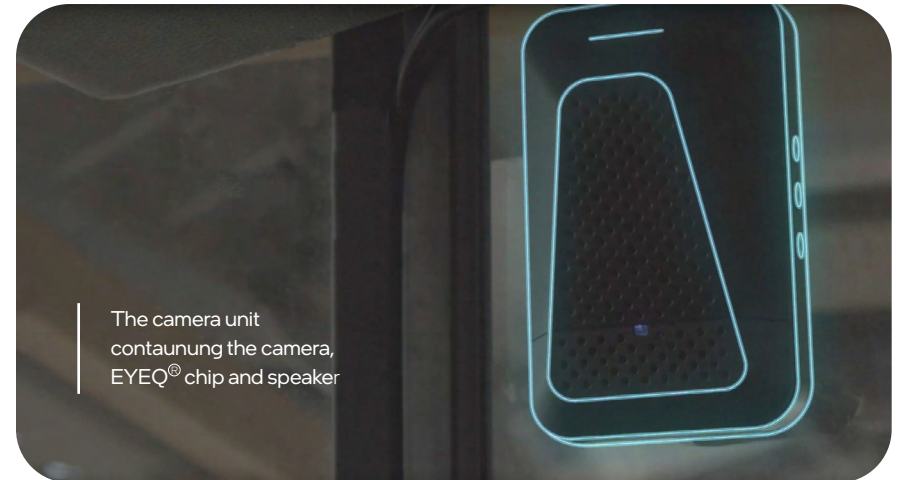
# The Mobileye Difference

The fleet safety experts at Mobileye quickly got to work in order to understand Professional Auto Transport's unique needs and the challenges its drivers encountered while hauling vehicles. After that consultation, Professional Auto Transport installed Mobileye's advanced collision avoidance system — including a vision sensor camera unit containing the Mobileye EyeQ chip and an EyeWatch visual alert display — on all 225 of its vehicles.

Installing the systems was quick and efficient, and required no alteration to the vehicles' interiors, meaning they could be back on the road and earning revenue without much delay — and now, with reduced risk to the driver or the vehicle.



*"What Mobileye brings to the trucking business is a higher level of safety."*



## Real-World ROI

The results Mobileye delivered for Professional Auto Transport were quick and noteworthy. Not only did Mobileye's real-time alerts help drivers improve their driving — thereby leading to a 31% reduction in preventable accidents (that is, accidents due to driver fault such as rear-ending vehicle ahead) — but Mobileye also helped them reduce overall insurance claims, which led to additional meaningful annual savings, for example in lower premiums.

"Our safety culture has grown as technology has grown, and our exposure has shrunk," says Dave Floyd, president of Professional Auto Transport. "What Mobileye brings to the trucking business is a higher level of safety."

# Voice of the Fleet

*"I see accidents on the road every day. You always have your eyes and ears open and watching all around you as you drive. I don't think I would drive without Mobileye."*

**James Dial,**  
Driver

*"Mobileye is a safeguard. It's security... your insurance company is going to like that you have it. Mobileye adds a sense of security to what we do."*

**Phil Gersheid,**  
Driver

# At a Glance

## CHALLENGE

Reduce accident rates, protect drivers and vehicles, and save on insurance premiums and claims

## ACTION

Implementing Mobileye's advanced collision avoidance system — including a vision sensor camera unit containing the Mobileye EyeQ chip and an EyeWatch visual alert display — across 225 vehicles

## RESULTS

**1**

Reducing at-fault  
accident rates  
by **31%**

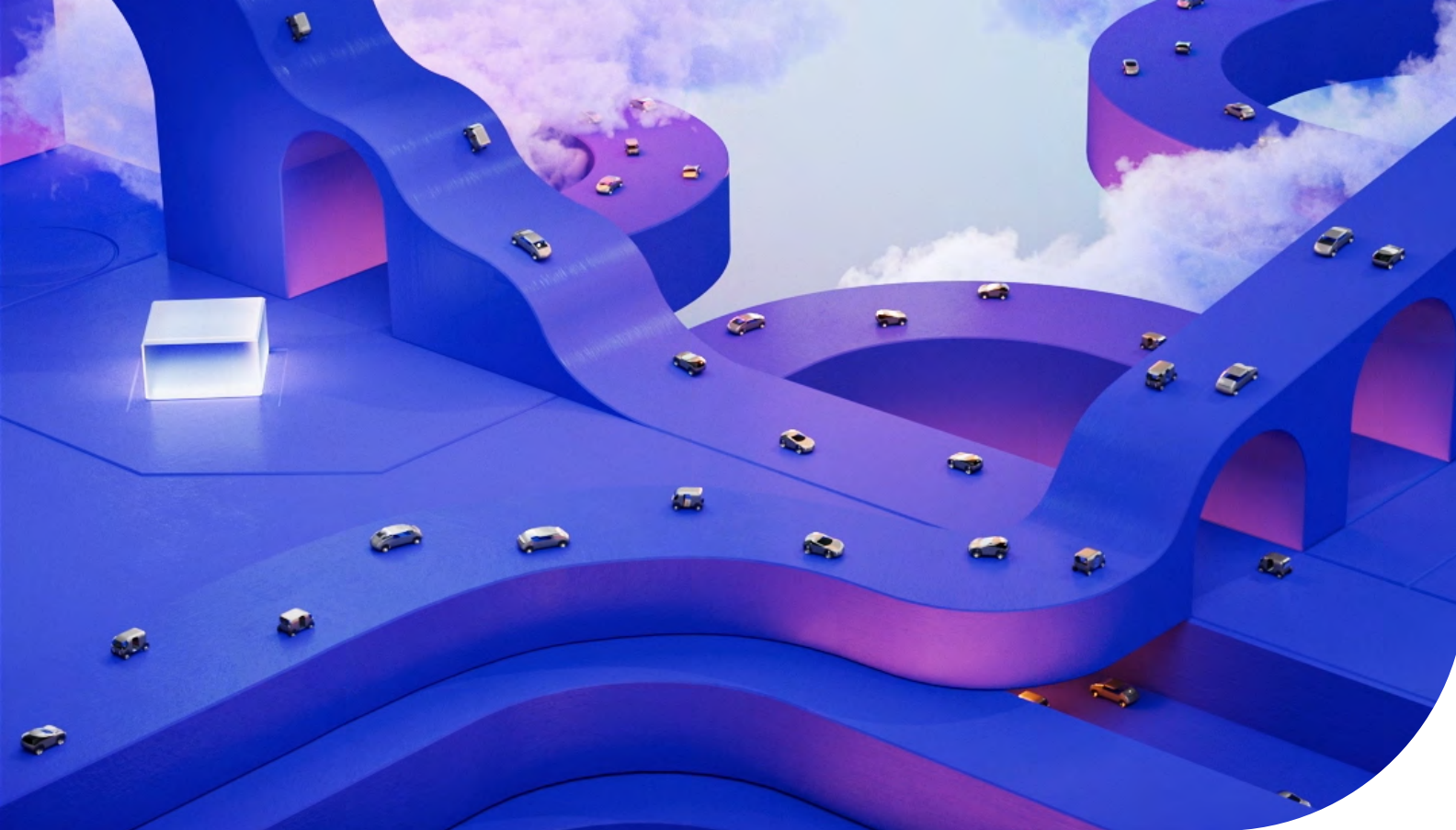
**2**

Improving overall  
vehicle and  
driver safety

**3**

Lowering spend on  
insurance claims  
and premiums

To learn how **Mobileye** can help reduce accidents, improve fleet safety, drive your safety culture, and reduce insurance and maintenance costs, get in touch with the team at Mobileye today at **(877) 867-4900**.



## About Mobileye

Mobileye™ is a global leader in the development of computer vision and machine learning, data analysis, localisation and mapping technologies for Advanced Driver Assistance Systems and autonomous driving solutions. Our safety technology is integrated into hundreds of new car models from the world's major automakers: BMW, Audi, Volkswagen, Nissan, Ford, Honda, General Motors and more. The Mobileye collision avoidance system is available with a single, forward-facing vision sensor suitable for almost any vehicle.

[www.mobileye.com/us](http://www.mobileye.com/us)